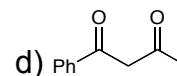
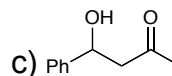
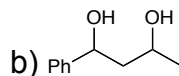
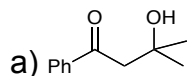
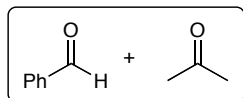
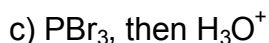
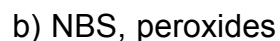
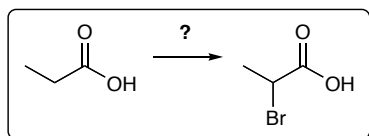


3 Points Each. Please mark your answers on the scantron sheet. You may keep this copy.

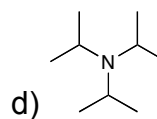
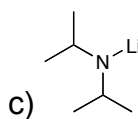
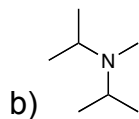
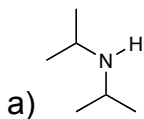
1. What is the product of the aldol reaction with the following two carbonyls?



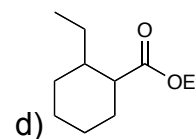
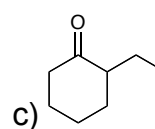
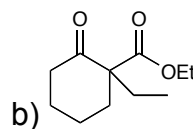
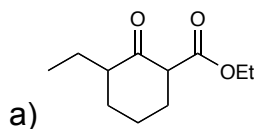
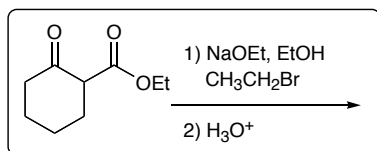
2. Which reaction conditions would be best to carry out the following transformation?



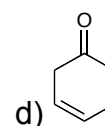
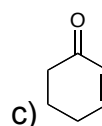
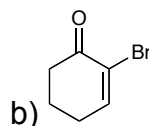
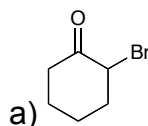
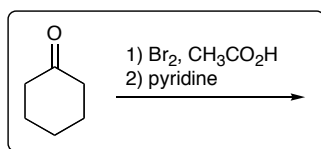
3. Which of the following is the structure for LDA?



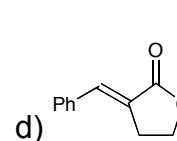
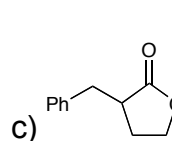
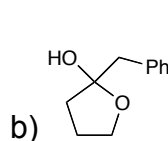
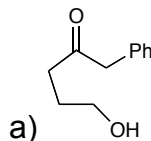
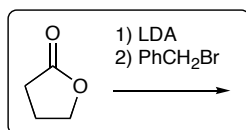
4. What is the product of the following sequence of reactions.



5. What is the product of the following sequence of reactions.



6. What is the product of the following reaction?



7. Which of the following molecules has the MOST ACIDIC hydrogens?

